



Magglingen – Biel/Bienne 2022

# FISU WORLD UNIVERSITY CHAMPIONSHIP ORIENTEERING



17<sup>th</sup> – 21<sup>st</sup> August 2022

## BULLETIN 1 + 2



## WELCOME TO SWITZERLAND

Dear athletes, ladies and gentlemen,

It is a great honour to welcome you on behalf of Swiss University Sports to the 22<sup>nd</sup> FISU World University Championship Orienteering, which will be held from 17<sup>th</sup> to 22<sup>st</sup> August 2022 in Magglingen – Biel/Bienne. It is for the third time that Switzerland is the organiser of Championship Orienteering. After 1980 in St. Gallen and 1994 in Fiesch VS, it is time to visit a region situated almost in the centre of our beautiful country.

Hardly any other sport so clearly exemplifies the motto of the International University Sports Federation FISU “Excellence in Mind and Body”. There have always been many students among the best orienteers of the world. Orienteering has also had a long tradition in the activities of Swiss University Sports. No wonder that Orienteering has been Switzerland’s most successful discipline at World University Championships for years. The Swiss team will of course be heading for medals also in 2022. At the same time, our goal is to be remembered as a great hosting country for this Championship.

You are warmly welcome to Switzerland!

Mike Kurt  
President Swiss University Sports

Dear orienteering friends,

The Organising Committee warmly welcomes you to 2022 Championship Orienteering. The event centre will be located in Magglingen - Biel/Bienne, the heart of sport in Switzerland.

Magglingen is nestling in the wonderful landscape of the Bernese Jura high above Biel/Bienne and on sunny days you will get post-card views of the Swiss “Mittelland” with the beautiful Swiss Alps in the background.

The region has hosted several big orienteering competitions in the past, e.g. three stages of Swiss 6-Days in 1999, the European Youth Orienteering Championship 2008 and more than ten Swiss Championships. The competition areas will show the variety of typical Swiss Mittelland terrain, a part of the Jura and nice cities for urban orienteering as well.

We are looking forward to hosting runners from all over the world in the beautiful surroundings of Magglingen – Biel/Bienne.

See you in August 2022!

Fritz Aebi  
President OC / Event Director 2022 World University Championship Orienteering



## MAGGLINGEN – BIEL/BIENNE

### MAGGLINGEN

Swiss sport knows Magglingen/Macolin as a unique centre for education. Under one roof you find the Federal Office of Sport (FOSPO) and it's most important and famous division, the Swiss Federal Institute of Sports Magglingen (SFISM). In Magglingen, national sports policy is shaped and developed, and national sports promotion programmes are evaluated, developed, and implemented. Courses and training centres are created, and services are provided through SFISM along with teaching, research and development in the sports sciences.

SFISM is the only university for sport in Switzerland, and all its staff are proud to be able to contribute to the advancement of Swiss sport. SFISM takes on sporting challenges and strives for optimum performance for the benefit of Swiss sport.



### BIEL/BIENNE

Biel/Bienne is a city in the Swiss canton of Berne and lies at the north-eastern end of Lake Biel in the Mittelland (Seeland), between the Alps and the Jura mountains. Easily accessible within one hour and half by train from the airport of Zurich. Biel/Bienne is the regional and economic centre for the Seeland as well as for the Bernese Jura and parts of Canton Solothurn. It also has several universities of applied sciences and is therefore a university city. Biel is the most important centre of the Swiss watch industry, as it is known as the world's watch metropolis due to the headquarters of the Swatch Group and the Rolex production facility.

The city is characterised by a homogeneous new town, which was built in the 1920s according to the rules of the Bauhaus and New Building style, especially in the train-station neighbourhood, and by an excellently preserved old town with a medieval structure.



## ORGANISERS

On behalf of the International University Sports Federation (FISU), the 2022 FISU World University Championship Orienteering will be organised by

- 2022 Championship Orienteering Organising Committee
- Swiss University Sports

in co-operation with

- impOLs, OL-Förderverein Oberraargau-Solothurn
- Swiss Federal Institute of Sport Magglingen (SFISM)
- Swiss Orienteering
- City of Biel/Bienne
- City of Langenthal

Event Director/President OC  
Technical Director  
Event Advisers

Fritz Aebi  
Jost Hammer  
Szava Zsigmond (HUN)  
Michael Eglin (SUI)

## SCHEDULE

August 2022	Programme
<b>Monday, 15<sup>th</sup></b>	Arrivals and accreditation; Free training; 1 <sup>st</sup> General Technical Meeting
<b>Tuesday, 16<sup>th</sup></b>	Model events
<b>Wednesday, 17<sup>th</sup></b>	Sprint Distance; Opening Ceremony
<b>Thursday, 18<sup>th</sup></b>	Long Distance
<b>Friday, 19<sup>th</sup></b>	Sprint Relay
<b>Saturday, 20<sup>th</sup></b>	Middle Distance
<b>Sunday, 21<sup>st</sup></b>	Relay; Closing Ceremony; Banquet
<b>Monday, 22<sup>nd</sup></b>	Departures

## COMPETITION RULES

The FISU Regulations for World University Championships and the Competition Rules for the IOF Foot Orienteering events (valid from 1<sup>st</sup> January 2022) will be applied in the event.



## PARTICIPANTS

Only competitors, who satisfy the following conditions may take part in a FISU World University Championship in 2022:

- Athletes must be a national of the country they represent;
- Athletes must be at least 18 and less than 25 years of age on January 1<sup>st</sup> in the year of the event; for 2022, athletes must be born between the 01/01/1997 and the 31/12/2004;
- Athletes must be students who are currently officially registered as proceeding towards a degree or diploma at a university or similar institute whose status is recognised by the appropriate national academic authority of their country;
- Athletes must be former students of the institutions mentioned above, who have obtained their academic degree or diploma in the year preceding the event.

Each country may enter a maximum of seventeen (17) persons of which twelve (12) competitors with maximum of six (6) males and six (6) females and five (5) officials.

Each country may enter in:

Long Distance	four (4) males and four (4) females
Middle Distance	four (4) males and four (4) females
Sprint Distance	four (4) males and four (4) females
Relay	two (2) male teams of three (3) persons and two (2) female teams of three (3) persons
Sprint Relay	one (1) team of two (2) female runners and two (2) male runners

## REGISTRATION AND FEES

### DEADLINES FOR ENTRIES

General entries	By 17 <sup>th</sup> February 2022
Quantitative entries 25 % deposit of participation fees	By 17 <sup>th</sup> May 2022
Individual entries Travel schedules of the delegations Media individual entries	By 17 <sup>th</sup> July 2022
Balance of participation fees	Upon arrival/by invoice
Final confirmation of competitors	At 1 <sup>st</sup> General Technical Meeting

All the general, quantitative and individual entries as well as travel schedules for each person should be filled in online, using FISU's online accreditation system at: <https://accreditation.fisu.net/Pages/Home.aspx>

FISU has provided all National University Sports Federations the passwords for the system.

The Organising Committee would like to emphasize already at this early stage the great importance of following the deadlines for the entries. Entries arriving after the required deadlines will not be accepted.

### **FISU REGISTRATION FEES**

FISU shall receive from each competing country the following FISU registration fees:

- member-associations of FISU: € 20.00 per participant
- non-member associations: € 40.00 per participant

These fees will be invoiced to the participating delegations by FISU.

### **PARTICIPATION FEES TO THE ORGANISING COMMITTEE (FULL BOARD AND EVENT SERVICES)**

- a participation fee of € 70.00 per person per night
- extra officials will pay a participation fee of € 140.00 per person per night

The Organising Committee will provide you with invoices by request for the payment of the participation fees or the fees may be paid to the following bank account:

WUC Orienteering 2022, Herzogenbuchsee  
BIC (Swift): RBABCH22450  
IBAN: CH80 0645 0600 2844 5267 3  
Clearing: 6450

## **VISA REQUIREMENTS AND TRAVEL DOCUMENTS ACCEPTED BY SWITZERLAND**

The prerequisite for immigration into Switzerland is a valid passport or another travel document accepted by the Swiss authorities. For travellers from certain countries a visa or further documents are required. Please check with your embassy if you need visa permits.

For more information on visa requirements and travel documents accepted by Switzerland please visit:

<https://www.eda.admin.ch/eda/en/fdfa/entry-switzerland-residence/visa-requirements-application-form.html>

**Please remember to start your visa application procedure in time!**

## COVID-19 MEASURES

Measures to avoid spreading of the coronavirus may be needed. If so, we will kindly ask all participants to follow these measures and restrictions. Additional information is presented in a Covid-19 Bulletin.

## INSURANCE

The organisers decline any liability that might occur through participation in 2022 FISU World University Championship Orienteering and trainings. Each person participates at her/his own risk and is responsible for her/his own insurance coverage (illness and accident).

## EVENT CENTRE MAGGLINGEN

The Event Centre/Athletes' Village of the Championship is located at the Swiss Federal Institute of Sport Magglingen (SFISM) campus area. The campus offers high standard accommodation, catering services, meeting rooms and sports facilities for all participants. All team officials' meetings will be held at the Event Centre.

The Athletes' Village will be open from Monday 15<sup>th</sup> - Monday 22<sup>nd</sup> August 2022.

There is no possibility to check in earlier at the SFISM. It is unfortunately fully booked the week before the championship. For assistance in finding accommodation before the championship please contact us as soon as possible by e-mail: [info@wucorienteering2022.ch](mailto:info@wucorienteering2022.ch).



## ACCOMMODATION

The SFISM offers 330 beds with high hotel standard, which all are located within walking



distance from the other SFISM services and facilities. All participants will be accommodated mainly in double rooms.

## CATERING

During the championship week the Restaurant Bellavista offers daily breakfast, lunch and dinner for all participants, officials and guests. The cafés of the SFISM will be open during the championship as well.

On some days due to the tight time schedule, lunch will be served at the finish areas of the competitions.

## ACCREDITATION

The accreditation office will be at the SFISM. All participants must obtain accreditation from FISU International Control Commission and from the Organising Committee (OC).

## TRANSPORT

Transport by train/bus for arriving and departing participants will be arranged from/to **Zurich airport** (ZRH, 110 km) to Biel/Bienne and from there to Magglingen according to their arrival and departure schedules received by 15<sup>th</sup> July 2022.

## LOCAL WEATHER CONDITIONS

August	Average	Maximum	Minimum
Temperature (°C)	18.9	25.0	14.0
Precipitation (mm)	113		

## INFORMATION AND MEDIA

The official website for 2022 FISU World University Championship Orienteering is online: [www.wucorienteering2022.ch](http://www.wucorienteering2022.ch). On Facebook and Instagram you can find us by name: WUC Orienteering 2022.

Media representatives and any other official representatives are requested to register by contacting [media@wucorienteering2022.ch](mailto:media@wucorienteering2022.ch).

## DOPING CONTROLS

Doping controls will be organised during the championship by Antidoping Switzerland in accordance with the FISU and the IOF guidelines.

## EMBARGOED AREAS

With reference to the Competition Rules for IOF Foot Orienteering Events, the listed areas are strictly out of bounds for all potential 2022 Championship Orienteering team members (competitors, team leaders, coaches, doctors etc.) and other persons who, through their knowledge of the terrain or the events, may influence the result of the competitions.

Offences must be reported to the Technical Director Jost Hammer by e-mail: [technicaldirector@wucorienteering2022.ch](mailto:technicaldirector@wucorienteering2022.ch)


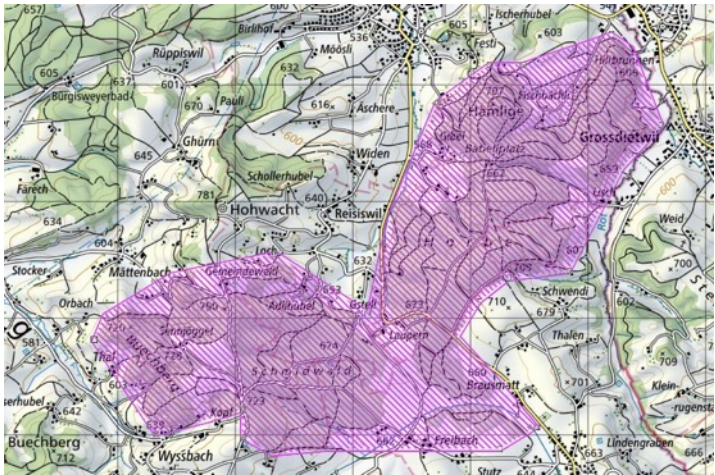

Copies of the most recent versions of the orienteering maps of the embargoed areas are published on our website [www.wucorienteering2022.ch](http://www.wucorienteering2022.ch).

## OVERVIEW MAP



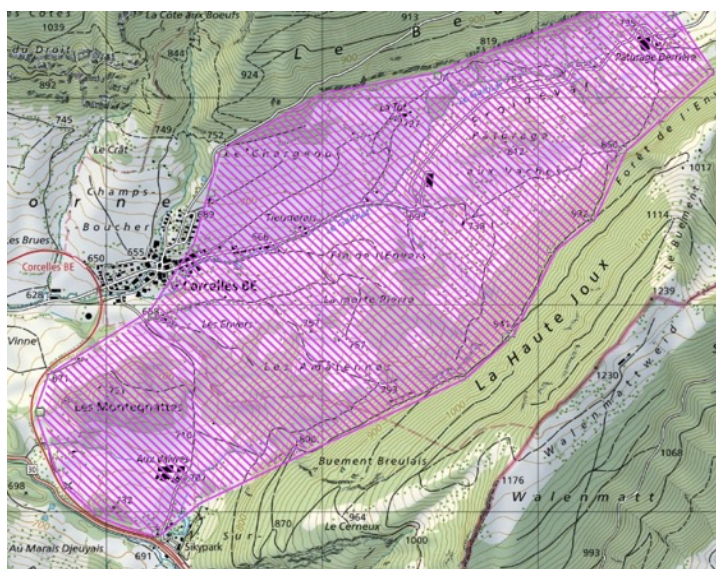


## EMBARGOED AREAS AND PREVIOUS O-MAPS

No	Area	Previous O-maps (latest edition)
1.	Magglingen (Event Centre)	
2.	Biel/Bienne (Sprint Distance) 	No previous map  ©swisstopo
3.	Schmidwald-Horben (Long Distance and Relay) 	Schmidwald Horben (2009) 1 : 15'000  Schmidwald (2016) 1 : 10'000  ©swisstopo
4.	Langenthal (Sprint Relay) 	Stadt Langenthal (2014) 1 : 4'000  ©swisstopo



## 5. Corcelles (Middle Distance)



Corcelles (2016)  
1 : 10'000

©swisstopo

## MAP DETAILS

Discipline	Mapmaker	Scale	Contour interval
Sprint Distance	Martin Howald	1 : 4'000	2 meters
Long Distance	Ernst Kläy	1 : 15'000	5 meters
Sprint Relay	Martin Howald	1 : 4'000	2 meters
Middle Distance	Urs Steiner	1 : 10'000	5 meters
Relay	Ernst Kläy	1 : 10'000	5 meters

Maps are drawn according to the International Specification for Orienteering Maps (ISOM 2017-2) and the International Specification for Sprint Orienteering Maps (ISSprOM 2019).

## TERRAIN DESCRIPTIONS

### SPRINT DISTANCE

Urban terrain (city), 450 m above sea level.

### LONG DISTANCE

Orienteering terrain between 600 and 750 m above sea level. Mostly coniferous forest. Hill sides with moderate to steep slopes. Some forest roads and hiking trails, varying vegetation on the ground. Runnability mostly good; visibility good.

### SPRINT RELAY

Urban terrain in a small city, 470 m above sea level with side streets and narrow footpaths; local traffic in some of the streets.

## MIDDLE DISTANCE

Orienteering terrain between 650 and 850 m above sea level. Coniferous forest with small semi-open to open Jura pasture. Hill side with moderate to steeper slopes. Some forest roads and hiking trails, no or moderate vegetation on the ground, rich in contour and rock details. Runnability mostly good, visibility good.

## RELAY

Orienteering terrain between 600 and 750 m above sea level. Mostly coniferous forest. Hill sides with moderate to steep slopes. Some forest roads and hiking trails, varying vegetation on the ground. Runnability mostly good, visibility good.

For more details and a short insight to the terrains see our website

[www.wucorienteering2022.ch](http://www.wucorienteering2022.ch).

## ESTIMATED WINNING TIMES

- |                                   |                                 |
|-----------------------------------|---------------------------------|
| • Sprint distance / sprint relay: | 15 min. / 4 x 15 min.           |
| • Long distance:                  | 70 min. (women) / 80 min. (men) |
| • Middle distance:                | 35 min.                         |
| • Relay:                          | 3 x 35 min.                     |

## PUNCHING

Touchfree SPORTident Air+ punching (SIAC) will be used on all events. Participants are asked to use their own SIAC card during the Championship week. A limited number of rental cards will be provided by the organiser.

## CLOTHING

According to the Swiss Orienteering Competition Rules it is forbidden to run with spike shoes in Switzerland. However, dobb spikes are allowed in forest races.

## TRAINING OPPORTUNITIES AND TRAINING MAPS

### MODEL EVENTS

Official model events on new maps (all of them surveyed and drawn in 2022) will be open on Tuesday 16<sup>th</sup> August:

Rappenchopf (Long Distance, Relay), Brunnersberg (Middle), Wangen a.A. (Sprint, Sprint Relay).

In addition all participants will get the Magglingen map. There will be set out controls on the SFISM campus during the whole competition week.

### FREE TRAININGS

Other training possibilities in relevant terrain prior to the championship: La Neuveville (Sprint, Sprint Relay), Malleray-Bévilard (Middle), Grabenöli and Blattenberg (Long and Relay).

Maps can be purchased laser-printed. Prices: Maps without controls, € 3.00 per copy, with controls € 5.00 per copy.

All enquiries about training opportunities should be addressed to the Technical Director Jost Hammer by e-mail: [technicaldirector@wucorienteeing2022.ch](mailto:technicaldirector@wucorienteeing2022.ch).

## RECOMMENDED O-EVENTS FOR 2022 CHAMPIONSHIP ORIENTEERING

9 <sup>th</sup> + 10 <sup>th</sup> April	National O-Weekend Bremgarten b. Bern (Middle Distance and Sprint Distance)
26 <sup>th</sup> May	National Competition Neuchâtel (Long Distance)
29 <sup>th</sup> May	National Competition Neuchâtel (Sprint Distance)
11 <sup>th</sup> + 12 <sup>th</sup> June	National Basel O-Weekend (Middle Distance, Sprint Distance and Sprint Relay)

## SWISS CHAMPIONSHIPS 2022

The Swiss Orienteering Championships Middle distance (MOM) and Relay (SOM) will be held on Saturday, 20<sup>th</sup> August and on Sunday, 21<sup>st</sup> August, right after the championship competitions. Entry can be done on [www.go2ol.ch](http://www.go2ol.ch). For more information please visit [www.wucorienteeing2022.ch](http://www.wucorienteeing2022.ch) and/or [www.mom2022.ch](http://www.mom2022.ch) resp. [www.som2022.ch](http://www.som2022.ch).

## CONTACT

**Mail:** [info@wucorienteeing2022.ch](mailto:info@wucorienteeing2022.ch)

**Website:** [www.wucorienteeing2022.ch](http://www.wucorienteeing2022.ch)

**Fritz Aebi**, Event Director, Mob +41 79 607 18 65,  
[eventdirector@wucorienteeing2022.ch](mailto:eventdirector@wucorienteeing2022.ch)

**Jost Hammer**, Technical Director, Mob +41 79 415 71 58,  
[technicaldirector@wucorienteeing2022.ch](mailto:technicaldirector@wucorienteeing2022.ch)



# **WELCOME TO SWITZERLAND AND 2022 FISU WORLD UNIVERSITY CHAMPIONSHIP ORIENTEERING!**

